

#YourSalisbury

# Salisbury Township School District



## Profile of a GRADUATE

### Knowledge + Literacies



Global  
Competence

Core  
Curriculum



Digital  
Literacy

Financial  
Literacy



Health  
Literacy

### Dispositions

- persistent
- curious
- risk-taker
- caring
- compassionate
- entrepreneurial
- resilient
- tolerant
- accepting

### Skills

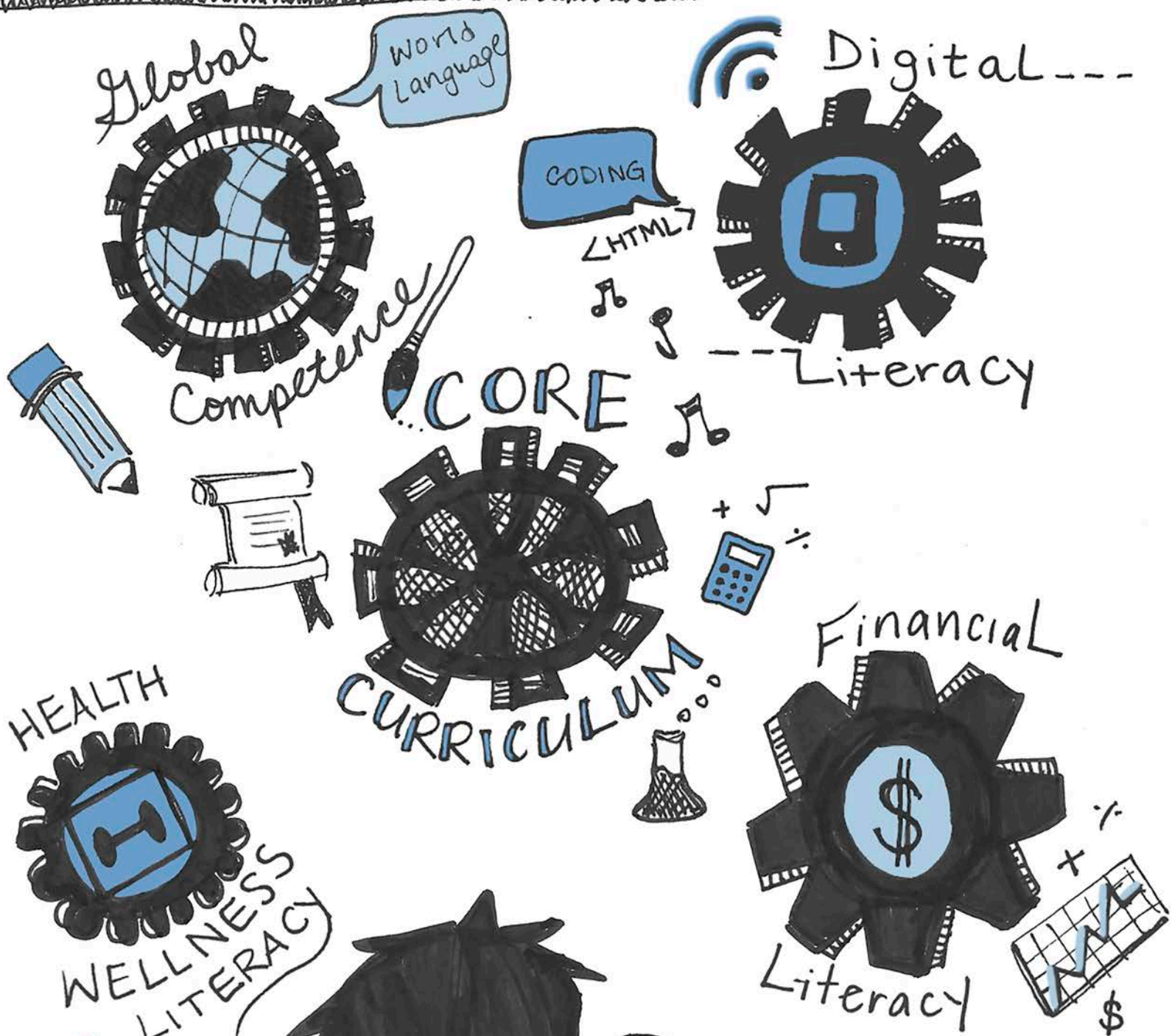
Think  
critically

Communicate  
effectively

create bravely

COLLABORATE  
WITH  
OTHERS

# KNOWLEDGE & LITERACIES



Do you  
Know...

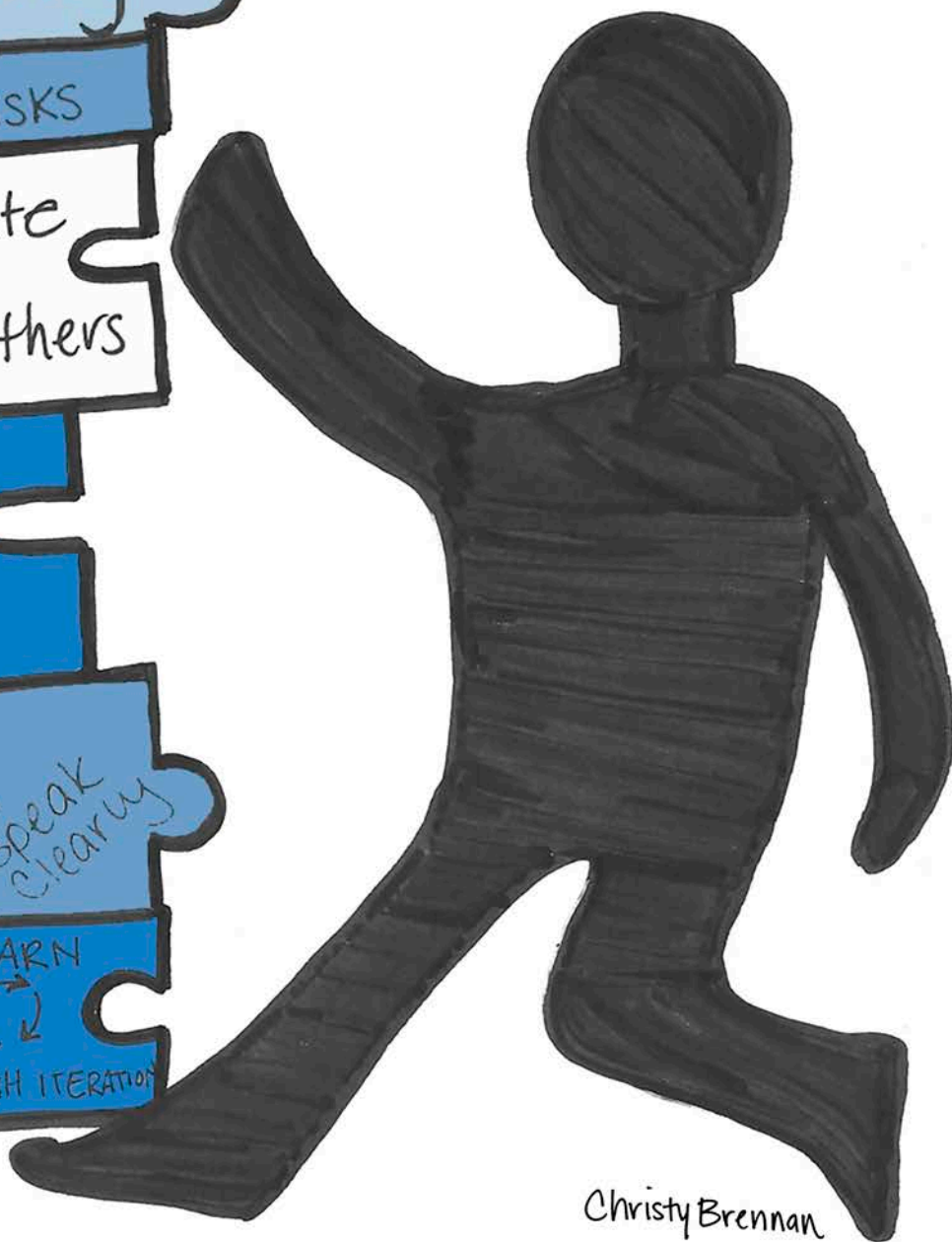
Christy Brennan

#YourSalisbury

# SKILLS

#YourSalisbury

Can  
you...



Christy Brennan

# DISPOSITIONS

Are  
you...

Persistent

an ethical  
decision maker

Resilient

CURIOUS?

Entrepreneurial

a  
risk-taker

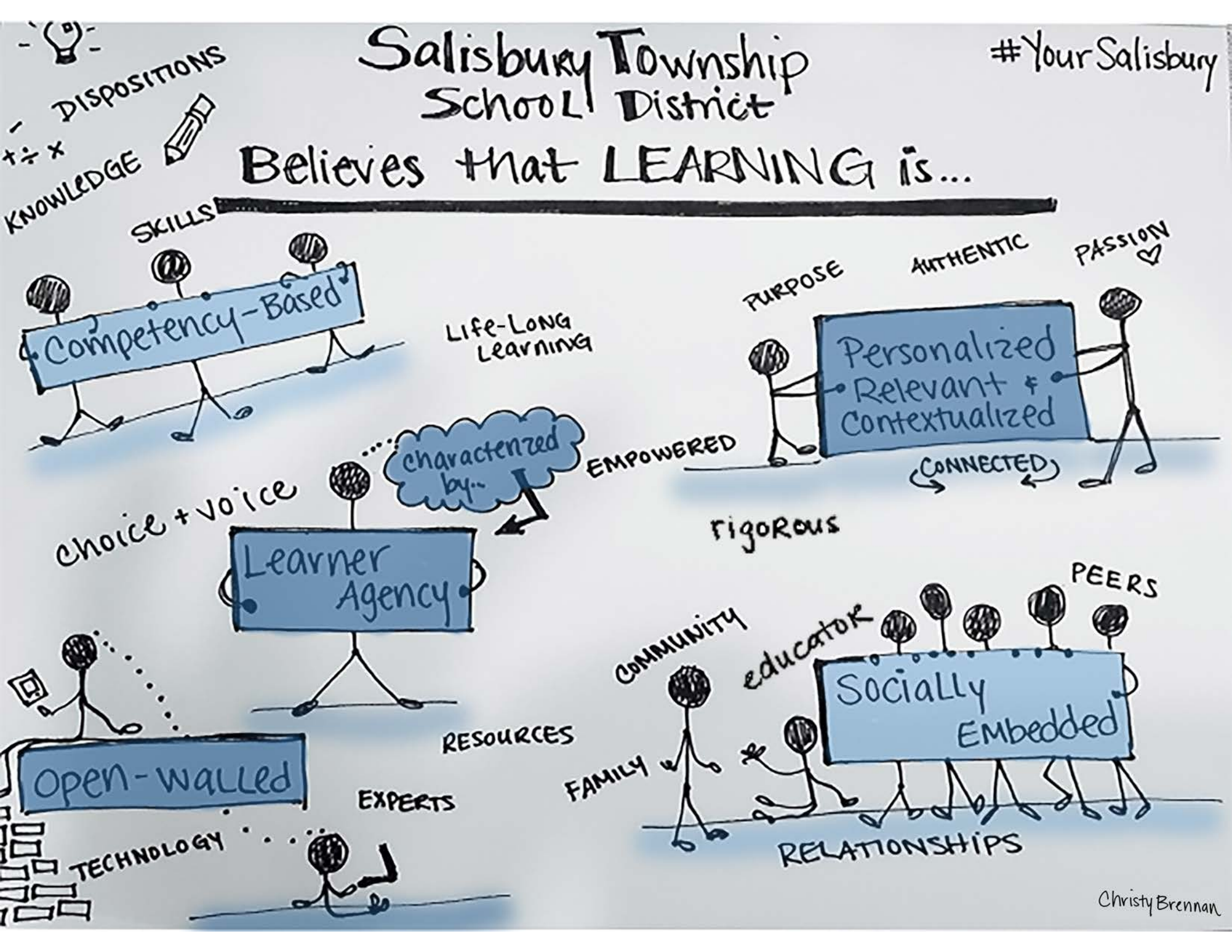
a responsible  
citizen

compassionate

CAR-ING

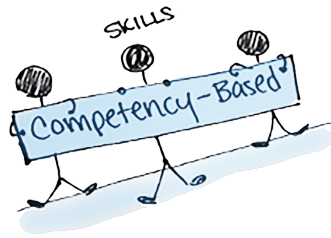
Tolerant  
and  
accepting  
of  
others





## THE **PURPOSE** OF A SALISBURY EDUCATION

To enable all learners to fulfill their full potential as empowered individuals, constructive members of the Salisbury community, productive participants in a changing economy, and engaged citizens of the United States and the world.



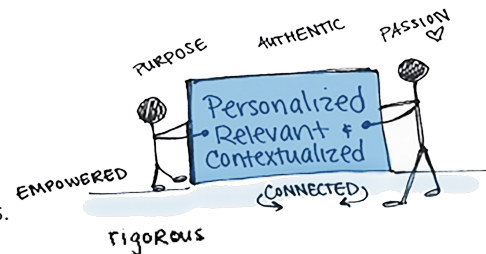
### COMPETENCY-BASED LEARNING

When the learner works toward competency and strives for mastery in defined domains of knowledge/literacies, skills, and dispositions.

- The learning environment should foster the development of the whole child, including skills and dispositions needed for success after graduation.
- Teaching methods should be grounded in constructivist and constructionist learning theories.
- Learner progress is measured in multiple ways, with feedback to enhance future growth.

### PERSONALIZED, RELEVANT, AND CONTEXTUALIZED LEARNING

An approach that uses such factors as the learner's own passions, strengths, needs, family, culture, and community as fuel for the development of knowledge, skills, and dispositions.

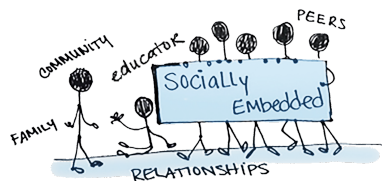


- Learning is personalized to learner's' passions and inquiry, in both content
- and teaching methods.
- Project-based learning allows students to utilize their natural talents and interests for authentic, interdisciplinary learning.
- The learning environment is characterized by rigor - work that is complex, purposeful and connected to real-world contexts.



Learning that is characterized by LEARNER AGENCY recognizes learners as active participants in their own learning and engages them in the design of their experiences and the realization of their learning outcomes in ways appropriate for their developmental level.

- All learners are active participants in lifelong learning, engaging personal choice and voice as they progress through competencies.
- Learners should have opportunities to develop entrepreneurial attitudes and skills.
- Co-curricular and extracurricular activities provide valuable opportunities for building character and developing cooperation.



## SOCIALLY EMBEDDED LEARNING

Rooted in meaningful relationships with family, peers, qualified adults, and community members and is grounded in community and social interaction.

- All of our learners are active, important members of a variety of communities (e.g: family, school, ethnic cultures, multimedia and friendship groups), and their understanding of the world develops through these social and cultural interactions.
- Student achievement is positively affected by the active involvement of engaged parents/guardians and caring adults in a supportive, safe environment.

## OPEN-WALLED LEARNING

Acknowledges that learning happens at many times and in many places and intentionally leverages its expansive nature in the learner's development of competencies.



- The most successful learning environments engage community resources and involve real-world experts in real projects.
- The learning environment requires the integration of ever-evolving technologies.